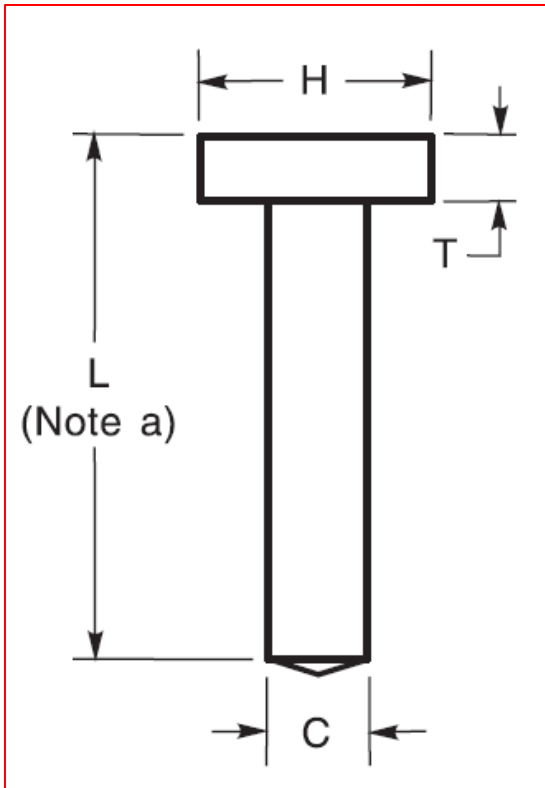


DIMENSION AND TOLERANCES OF STANDARD-TYPE HEADED STUDS (AWS D1.1)



^a Manufactured length before welding.

Standard Dimensions, mm				
Shank Diameter	Length Tolerances	Head Diameter	Minimum Head Height	
[C]	[L]	[H]	[T]	
10	+0.25 -0.25 ± 1.6	19 ± 0.40	7.1	
13	+0.25 -0.25 ± 1.6	25 ± 0.40	7.1	
16	+0.25 -0.25 ± 1.6	32 ± 0.40	7.1	
19	+0.40 -0.40 ± 1.6	32 ± 0.40	9.5	
22	+0.40 -0.40 ± 1.6	35 ± 0.40	9.5	
25	+0.40 -0.40 ± 1.6	41 ± 0.40	12.7	